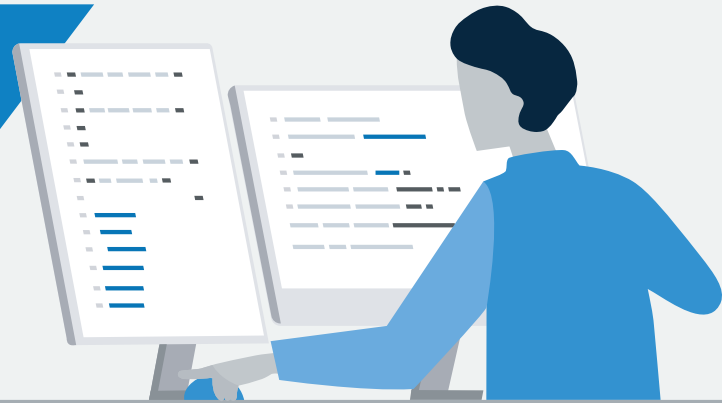


LeapX

Intuitive user experiences are redefining the automotive world. As user expectations evolve, seamless HMI engineering & collaboration is the need of the hour.



Stay Ahead of the Curve with Bosch LeapX – Your Partner in Success for Transparent & Collaborative HMI Development

OEMs and Product Owners frequently face challenges with the design, launch and update of UX/UI in the market, incurring delays, defects & increased costs.

Business challenges



High turnaround time for handling UX exchanges



Requirements gaps & defects



Difficulty to keep all stakeholders in sync



Cumbersome to store, version & reuse UX artefacts



Challenges to reuse artefacts across variants



Text fitment & truncation issues in multiple languages & screens



Operational challenges with various suppliers in the ecosystem using different tools & process



High maintenance cost

How these challenges can be resolved



Seamlessly integrate all stakeholders, processes & tools in a single platform



Increase Reusability & reduce overall development time resulting in faster releases



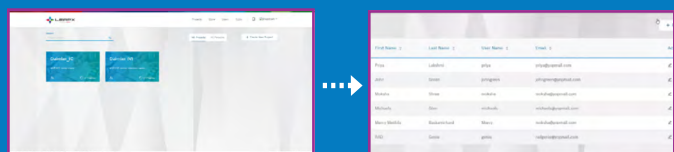
Uncover Defects early at Design Stage which otherwise would be detected only during final system testing



Automate Specification preparation, graphics visual differences logs, HMI change logs, translations & other effort intensive manual work

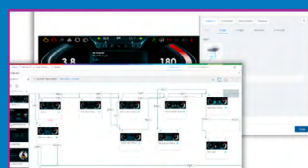
Bosch brings you **LeapX**

A next gen cloud-based platform for collaborative HMI SW engineering that facilitates seamless collaboration between Automotive OEMs and Designers, Translators, Developers and Testers. LeapX enables OEMs to automate and streamline their HMI processes without any need to migrate away from the tool of their choice.

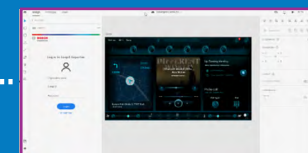


1 Create/Clone Projects & Variants

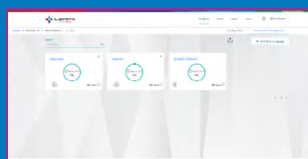
2 Invite users, assign roles/permissions & define approval workflows



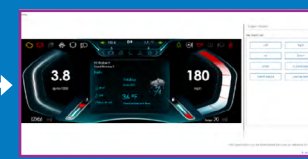
4 Create/Edit Screen contents & Transitions



3 Import HMI assets & Store/Version it



5 Perform AI assisted & Pixel perfect Text Translations



6 Simulate HMI, Get feedback/approval, Generate HMI Spec. & Layouts for Dev. team

Value Adds to the Customer



HMI development effort reduced by **25%**



Increased reusability and faster releases



Cloud-based granular access control with no local software installation required



Reduced manual coordination work



Seamless vendor management (Design Agencies, Translators, Integrators and Testing Teams)



Effortless management of rapidly changing HMI requirements and building prototypes, quickly



Time to market shortened by **20%**



Early-stage detection and rectification of defects



Seamless collaboration between designers, developers, testers & translators across the globe, anytime



Streamlined and automated HMI processes without migrating away from legacy tools



AI-assisted translations in 40 languages with pixel perfect text fitment validation in real time

With LeapX deliver modern & intuitive user experiences in-line with your unique brand language

[LEARN MORE](#)

CONTACT

Bosch Global Software Technologies Pvt Ltd

India | USA | Europe | UK | Japan | Middle East | China

For more information, send your enquiries to Karthikeyan.Kannan@in.bosch.com

